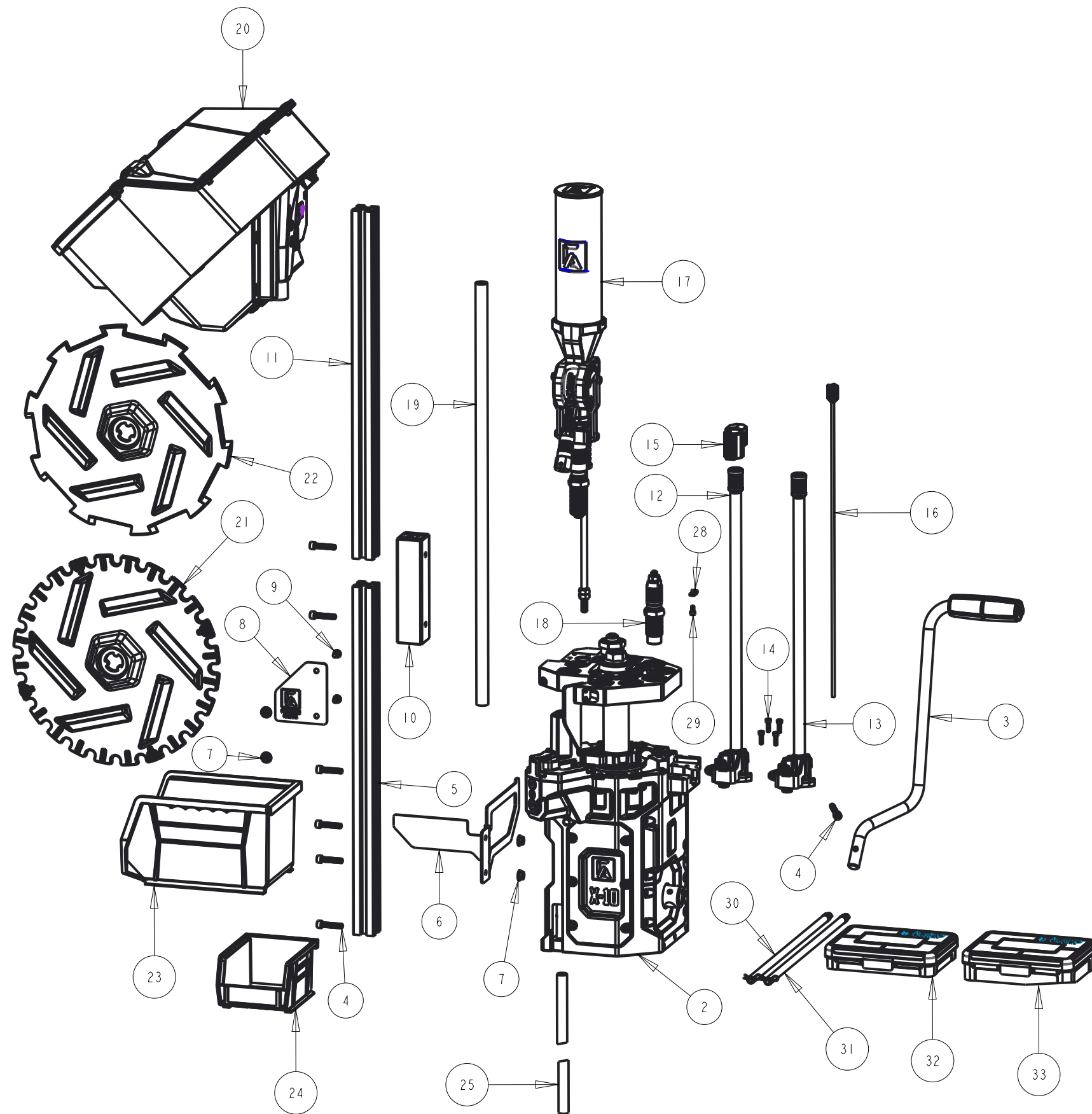


BILL OF MATERIAL

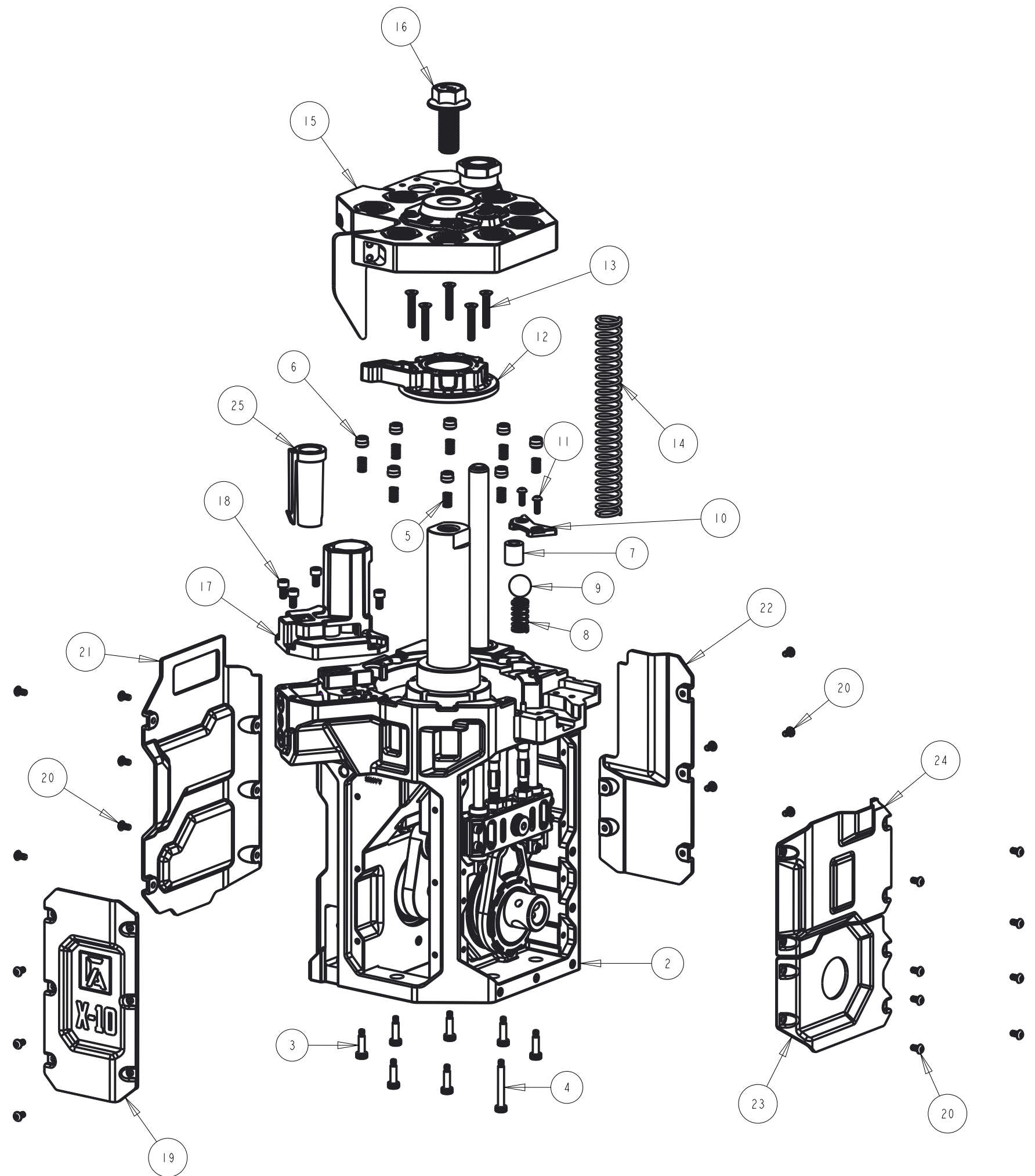
| No. | Component Name | Part No. | Type | Qty. |
|-----|--|----------|----------|------|
| 1 | X-10 PROGRESSIVE RELOADING PRESS | 1152610 | ASSEMBLY | 1 |
| 2 | X-10 PRESS ASSEMBLY | 1152166 | ASSEMBLY | 1 |
| 3 | ROLLER HANDLE ASSEMBLY | 1147803 | ASSEMBLY | 1 |
| 4 | SCREW, CAP, M6X1.0, 30MM LENGTH, BO | 1150482 | PART | 7 |
| 5 | LOWER CASE FEED STAND | 1150466 | PART | 1 |
| 6 | BIN BRACKET, FX CASE FEEDER | 1171428 | PART | 1 |
| 7 | NUT, HEX FLANGE, M6X1.0, SSTL | 1175238 | PART | 4 |
| 8 | BRASS DEFLECTOR, X-10 | 1195493 | PART | 1 |
| 9 | SCREW, M6X1.0, 10MM LENGTH, 18-8 SSTL | 1195384 | PART | 2 |
| 10 | CASE FEED STAND COUPLER, | 1175710 | PART | 1 |
| 11 | UPPER CASE FEED STAND | 1175711 | PART | 1 |
| 12 | PRIMING ASSEMBLY, SMALL PRIMER | 1149908 | ASSEMBLY | 1 |
| 13 | PRIMING ASSEMBLY, LARGE PRIMER | 1149791 | ASSEMBLY | 1 |
| 14 | SCREW, SOCKET CAP, M4X0.7, 14MM, BO | 1138683 | PART | 4 |
| 15 | LOW PRIMER SENSOR ASSEMBLY | 1151387 | ASSEMBLY | 1 |
| 16 | PRIMER FOLLOWER ASSEMBLY | 1200600 | ASSEMBLY | 1 |
| 17 | CASE-ACTIVAED POWDER MEASURE | 1141172 | ASSEMBLY | 1 |
| 18 | CASE SUPPORT DIE ASSEMBLY | 1150663 | ASSEMBLY | 1 |
| 19 | TUBE, CASE FEEDER | 1151289 | PART | 1 |
| 20 | CASE COLLATOR ASSEMBLY | 1172436 | ASSEMBLY | 1 |
| 21 | PISTOL SHELL PLATE ASSEMBLY | 1187947 | ASSEMBLY | 1 |
| 22 | RIFLE SHELL PLATE, FX CASE FEEDER | 1130977 | PART | 1 |
| 23 | BIN, 5.5"X8.7"X5.0", HANGABLE, BLACK | 1165902 | PART | 1 |
| 24 | BIN, 4.125"X5.375"X3.0", HANGABLE, BLACK | 1187158 | PART | 1 |
| 25 | PRIMER TUBE | 1151288 | PART | 1 |
| 26 | CORD, DUAL 3.5MM JACK | 1152696 | PART | 1 |
| 27 | CABLE, MICRO USB TO USB-A, 2M LENGTH | 1187249 | PART | 1 |
| 28 | P-CLIP, 2.75MM | 1187157 | PART | 1 |
| 29 | CAP SCREW, M4X0.7, 8MM LENGTH, BO | 1149524 | PART | 1 |
| 30 | PICKUP TUBE ASSEMBLY, SMALL PRIMER | 1149795 | ASSEMBLY | 1 |
| 31 | PICKUP TUBE ASSEMBLY, LARGE PRIMER | 1149815 | ASSEMBLY | 1 |
| 32 | X-10 ACCESSORY KIT | 1150653 | ASSEMBLY | 1 |
| 33 | CASE FEED ACCESSORY KIT | 1174945 | ASSEMBLY | 1 |
| 34 | 110V USB ADAPTER | 1184337 | PART | 1 |
| 35 | 12V ADAPTER, 110/230V | 1198568 | PART | 1 |



THE FOLLOWING ITEMS ARE NOT SHOWN IN THE EXPLODED DIAGRAM:
 26 - CORD, DUAL 3.5MM JACK
 27 - CABLE, MICRO-USB TO USB-A, 2M LENGTH
 34 - 110V USB ADAPTER
 35 - 12V ADAPTER, 110/230V

BILL OF MATERIAL

| No. | Component Name | Part No. | Type | Qty. |
|-----|--|----------|----------|------|
| 1 | X-10 PRESS ASSEMBLY | 1152166 | ASSEMBLY | 1 |
| 2 | BASE ASSEMBLY, X-10 | 1164334 | ASSEMBLY | 1 |
| 3 | SHOULDER SCREW, 5MM, 15MM LENGTH, M4X0.7, BO | 1143085 | PART | 7 |
| 4 | SHOULDER SCREW, 5MM, 35MM LENGTH, M4X0.7, BO | 1148256 | PART | 1 |
| 5 | CARTRIDGE LOCATOR SPRING | 1143087 | PART | 8 |
| 6 | LOCATOR BUTTON, SMALL BASE | 1143086 | PART | 8 |
| 7 | BUSHING, 8X15X17MM, OIL EMBEDDED, SAE 841 BRONZE | 1187817 | PART | 1 |
| 8 | DETENT SPRING | 1143882 | PART | 1 |
| 9 | SHELL PLATE DETENT BALL | 1108748 | PART | 1 |
| 10 | DETENT RETAINER, X-10 | 1168616 | PART | 1 |
| 11 | BUTTON HEAD SCREW, M4X0.7, 12MM, BO | 1140754 | PART | 2 |
| 12 | BEARING CLAMP | 1136769 | PART | 1 |
| 13 | SCREW, FLAT HEAD, M5X0.8, 35MM, CLASS 10.9, BO | 1136824 | PART | 5 |
| 14 | RETURN SPRING | 1147713 | PART | 1 |
| 15 | TOOL HEAD ASSEMBLY | 1149165 | ASSEMBLY | 1 |
| 16 | CAP SCREW, M16X2.0, 50MM, BO | 1143774 | PART | 1 |
| 17 | BASE, X-10 CASE FEEDER | 1164336 | PART | 1 |
| 18 | SCREW, SOCKET CAP, M5X0.8, 10MM, BO | 1138559 | PART | 4 |
| 19 | COVER, FRONT | 1148626 | PART | 1 |
| 20 | SCREW, BUTTON HEAD, M4X0.7, 8MM LENGTH, BO | 1149782 | PART | 24 |
| 21 | COVER, LH | 1150243 | PART | 1 |
| 22 | COVER, BACK | 1149745 | PART | 1 |
| 23 | COVER, RH LOWER | 1151499 | PART | 1 |
| 24 | COVER, RH UPPER | 1152409 | PART | 1 |
| 25 | #1 CASE REDUCER, X-10 CASE FEEDER | 1146360 | PART | 1 |



BILL OF MATERIAL

| No. | Component Name | Part No. | Type | Qty. |
|-----|--|----------|----------|------|
| 1 | BASE ASSEMBLY, X-10 | 1164334 | ASSEMBLY | 1 |
| 2 | PRESS BASE, X-10 | 1163759 | PART | 1 |
| 3 | BEARING, 50X80X16 SEALED, 6210-2RS | 1136748 | PART | 2 |
| 4 | GREASE FITTING, M6X1.0, STRAIGHT, SSTL | 1187809 | PART | 1 |
| 5 | SCREW, CAP, M10X1.5, 16MM LENGTH, BO | 1151357 | PART | 2 |
| 6 | THROW ASSEMBLY | 1146388 | ASSEMBLY | 1 |
| 7 | MAIN JOURNAL, RH | 1146412 | PART | 1 |
| 8 | CAP SCREW, M10X1.25, 40MM LENGTH, BO | 1138093 | PART | 2 |
| 9 | MAIN JOURNAL, LH | 1146574 | PART | 1 |
| 10 | GUIDE ROD, LOWER TOOL HEAD | 1146545 | PART | 2 |
| 11 | SCREW, SOCKET CAP, M4X0.7, 14MM, BO | 1138683 | PART | 8 |
| 12 | LOWER TOOL BLOCK ASSEMBLY | 1146668 | ASSEMBLY | 1 |
| 13 | LOWER TOOL HEAD CONNECTOR ASSEMBLY | 1146866 | ASSEMBLY | 1 |
| 14 | SHOULDER SCREW, 10MM, 18MM LENGTH, M8X1.25 | 1143364 | PART | 2 |
| 15 | SWAGE PIN, SMALL PRIMER | 1149668 | PART | 1 |
| 16 | NUT, HEX FLANGE, 8X1.25, SSTL | 1143937 | PART | 2 |
| 17 | PRIMING PIN, SMALL PRIMER | 1152348 | PART | 1 |
| 18 | WASHER, M10, 2.0MM THICK, NYLON | 1171979 | PART | 1 |
| 19 | INDEX ARM ASSEMBLY | 1146646 | ASSEMBLY | 1 |
| 20 | INDEX GUIDE | 1137390 | PART | 2 |
| 21 | INDEX CARRIAGE ASSEMBLY | 1146673 | ASSEMBLY | 1 |
| 22 | ALIGNMENT ROD | 1145166 | PART | 1 |
| 23 | CAP SCREW, M6X1.0, 25MM LENGTH, BO | 1147739 | PART | 3 |
| 24 | CASE FEED CARRIAGE ASSEMBLY | 1172120 | ASSEMBLY | 1 |
| 25 | CASE FEED RETURN SPRING | 1161030 | PART | 1 |
| 26 | CASE FEED RETURN SPRING GUIDE | 1172119 | PART | 1 |
| 27 | SHOULDER SCREW, 8MM, M6X1.0, 55MM LENGTH, BO | 1146191 | PART | 2 |
| 28 | #1 CASE PLUNGER | 1164343 | PART | 1 |
| 29 | SCREW, CAP, M4X0.7, 10MM LENGTH, 18-8 SSTL | 1161028 | PART | 2 |

